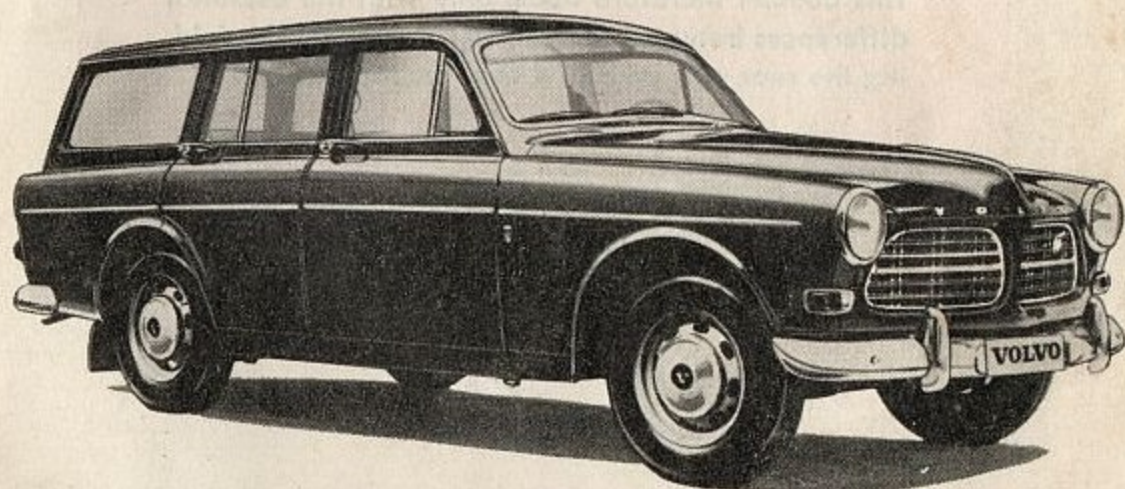




THE VOLVO 121/122 S ESTATE CAR

**SUPPLEMENT TO THE VOLVO 121/122 S
INSTRUCTION BOOK**



The Instruction Book for the ordinary 121/122 S
largely applies for the Estate Car.

This booklet therefore deals only with the essential
differences between the vehicles, for example, fold-
ing the rear seat up and down, the tailgate, etc.

Description, driving and maintenance

General

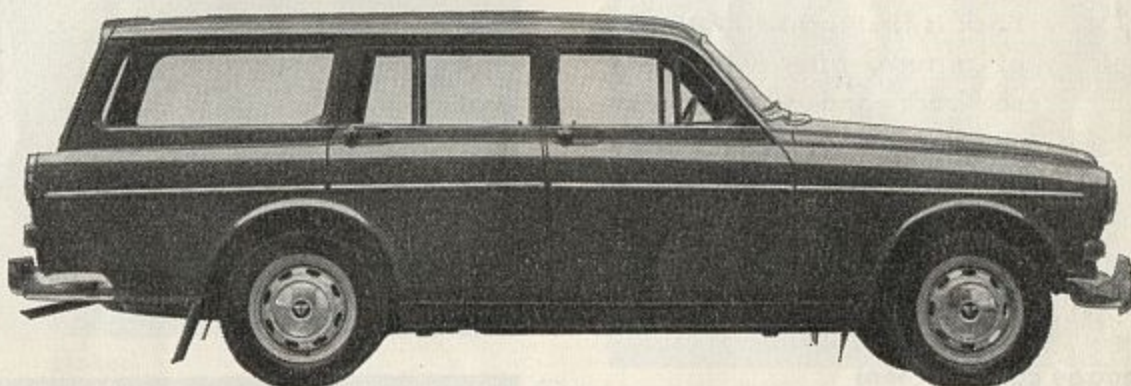
The Volvo 121/122 S Estate Car is a 5-seater passenger car with a large luggage space behind the rear seat.

If extra large luggage space is required, the rear seat can be folded down out of the way. By this means a flat loading space almost 1.8 m (6 ft.) long can be obtained.

For transporting long objects it is also possible to drive with the tail-gate and rear window open. When doing so, take the precautionary measures against carbon monoxide mentioned in the 121/122 S Instruction Book. The corners of the rear bumper are made in the form of a flat, rubber-covered footstep for loading the roof-rack if fitted.

In order to withstand heavy loading, the Estate Car is provided with strong rear springs supplemented with rubber auxiliary springs.

The Estate Car is provided with power-assisted brakes which give light pedal pressure even with heavy loads.



Type designation	Engine	Gearbox	Rear axle
Volvo 221342 M	B 18 A	M 40	4.56:1
Volvo 222342 M	B 18 D	M 40	4.56:1

Driving

Recommended speeds for the different gears

Gear	1	2	3	4
Speed 221342 M	km.p.h. 0-45	15-65	25-95	35-
	m.p.h. 0-28	10-40	15-60	22-
222342 M	km.p.h. 0-50	20-75	30-110	40-
	m.p.h. 0-30	13-47	18-70	25-

Body

Rear seat

When extra large luggage space is required, the rear seat can be folded as follows: N.B. When folding down the rear seat, the front seats must not be in their rearmost positions.

1. Lift up the seat cushion at the rear edge and pull it over forwards.
2. Turn the handle on the rear of the seatback a quarter of a turn so that the catch releases. Tip the seatback forwards and downwards and press it right down so that the catch engages as shown in Fig. 2.
3. When pulling the rear seat up, the handle on the seatback is first turned a quarter of a turn, after which the seatback and seat cushion are hinged up. Make sure that the seatback is pressed right back so that the catch device locks it in the hinged-up position.

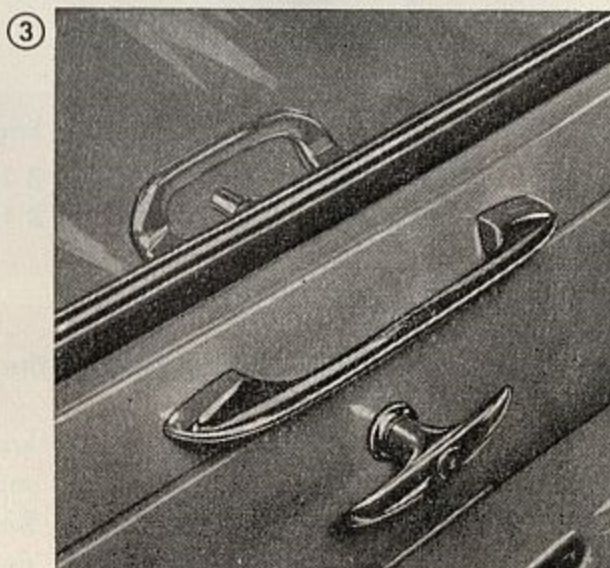


Luggage compartment

The luggage compartment is directly accessible from inside and also from outside after the tailgate and rear window or the rear side doors have been opened.

The tailgate and rear window are opened from outside by turning the rear handle. They can also be opened from inside by pressing in the button on the lock.

When opening the tailgate, the rear window is automatically



lifted to the fully open position by means of a pneumatic spring fitted on the left side.

The tailgate is pulled down while holding the handle in the turned position.

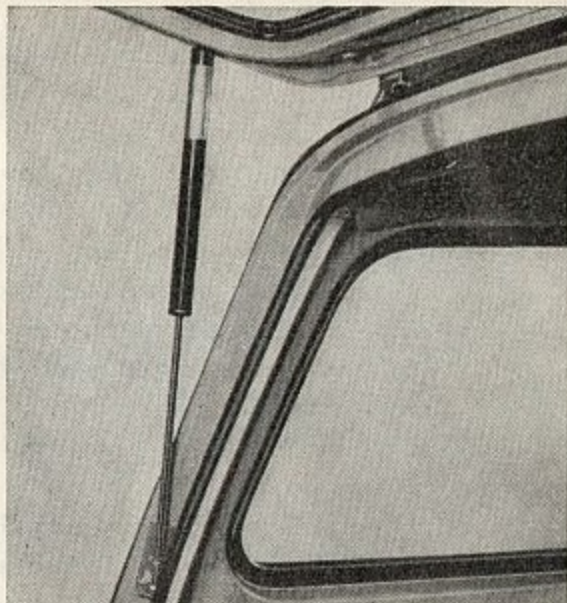
The rear window can be adjusted to four different positions. To do this, the catch button on the stay is pressed in so that the catch engages in one of the holes, see Fig. 5.

When closing, the tailgate is first hinged up. If the rear window has been held as described above, release it and then hinge it downwards and press it into the locked position.

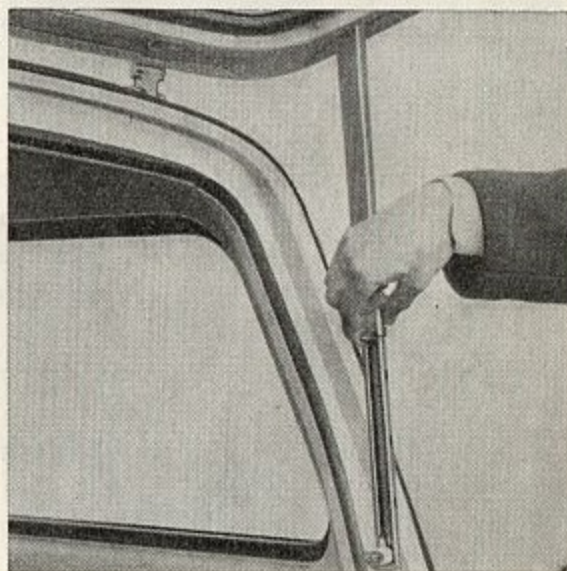
When driving with the tailgate open, the precautionary measures against carbon monoxide as described in the 121/122 S Instruction Book should be taken. N.B. When driving with the tailgate open, the rear license plate should be hinged down so that the number is visible, see Fig. 7.

Do not forget to hinge the plate back again when the tailgate is closed.

④



⑤



⑦⑥

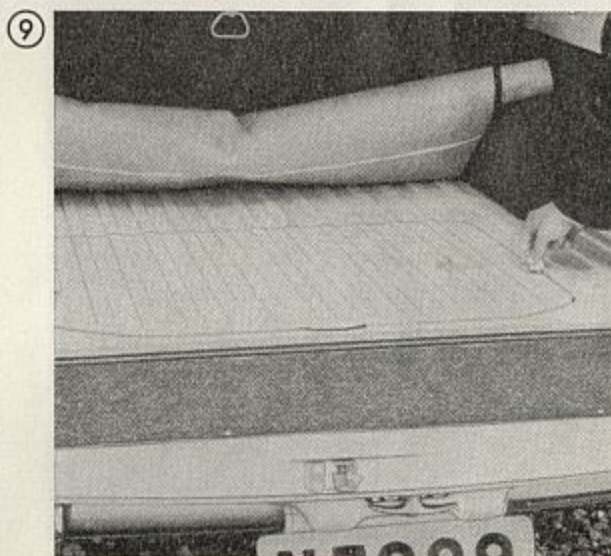
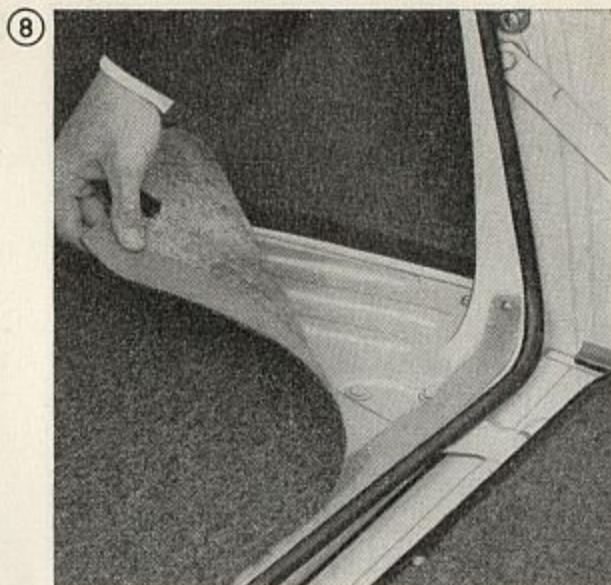


Spare wheel, jack and tools

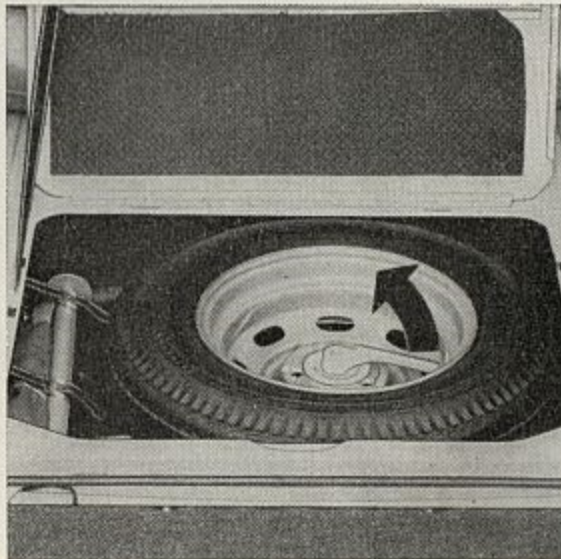
The spare wheel, jack and tools are placed in a recess under the luggage compartment floor.

They are accessible after the mat has been rolled out of the way and the lid lifted up.

1. Pull up the rear edge of the mat on the luggage compartment floor and roll it forwards.
2. Lift both the catches and hinge up the lid.
3. The spare wheel is released by pulling up the securing handle. This releases the hook and the handle can then be taken off and the wheel lifted out.
4. Clean the changed wheel before placing it in the spare wheel compartment and then put in the securing handle so that the hook engages in the attachment on the bottom plate. Then press down the handle.
5. Hinge down the lid and lock it with the catches, roll back the mat into position and



11 10



fasten it to the press buttons and at the rear edge where it is secured by the teasel strip.

6. The spare wheel can also be stowed vertically against the left wall where there is a hole for the securing bolt of the wheel, see Fig. 12.

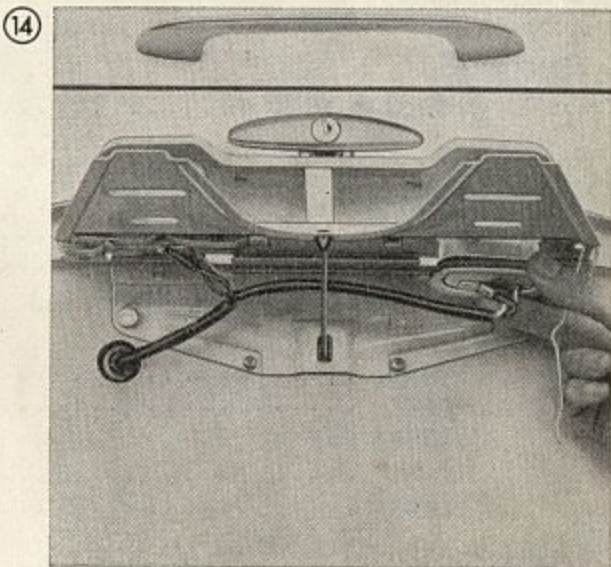
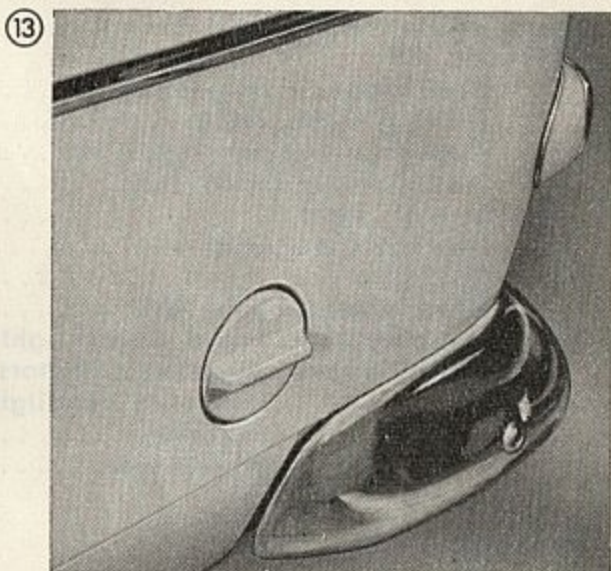
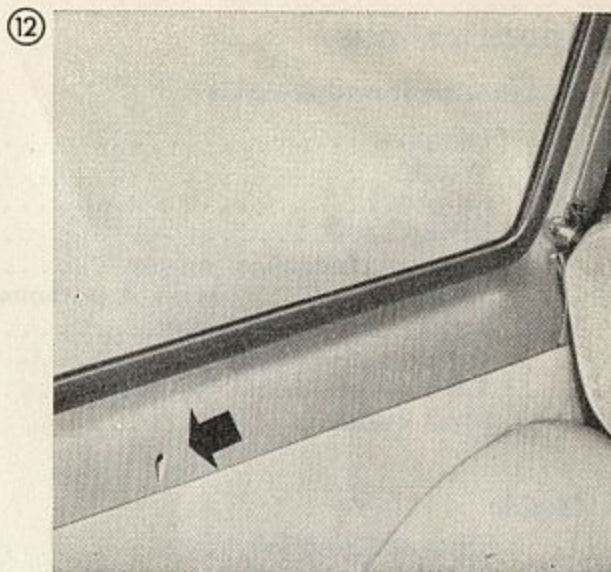
Fuel tank

The tank is located at the rear under the floor with the filling hole on the left side.

The filling cap is removed by turning to the left.

Replacing bulbs for number plate lighting

If either of the bulbs for the number plate lighting needs replacing, the number plate carrier is hinged upwards, after which the clamp which holds the bulb is released by pulling it out sideways. The bulb holder can then be removed and the bulb replaced. Make sure that the gasket locates correctly and hinge down the plate.



Specifications

Measurement and weights

Length	4455 mm (175 ½")
Width	1630 mm (64 ⅛")
Height.....	1495 mm (58 7⁄8")
Wheelbase.....	2600 mm (102 ¾")
Ground clearance, empty	210 mm (8 ¼")
with 4 persons..	180 mm (7")
Track, front and rear	1315 mm (51 ¾")
Turning circle	10.6 m (34 ft. 9")
Kerb weight (with full tank)	1190/1200 kg (2618/2640 lb.)
Lead capacity.....	500/490 kg (1100/1078 lb.)

Engine

Type designation	221342 M	222342 M
Engine designation	B 18 A	B 18 D

Bulbs, 12 volt

12 volt	Rating	Socket	Number
Headlamps, asymmetrical	45/40 W	P 45 t	2
Parking lights, front	5 W	Ba 15 s	2
Flashers, front and rear	32 CP*	Ba 15 s	4
Stop/parking lights, rear	32/4 CP*	Ba 15 d spec.	2
Back-up light	15 W	Ba 15 s	2
Number plate light	5 W	S 8	2
Roof light	10 W	S 8	1
Glove compartment light	2 W	Ba 9 s	1
Instrument and heater control lighting	2 W	Ba 9 s	3
Warning lamp, direction indicators . .	2 W	Ba 9 s	1
full-beam headlights	2 W	Ba 9 s	1
charging	2 W	Ba 9 s	1
oil pressure	6 W	Ba 9 s	1

Gearbox

Type designation M 40

Rear axle

Reduction ratio 4.56:1

Wheels and tyres

Tyre size	6.40—15 4PR or 6.40S15 6PR		
Rim size	4 1/2 J X 15		
Tyre pressure, kg/cm ² (lb/sq.in.)	1—2	4—5	Fully
6.40—15 4PR	persons	persons	loaded
front	1.4 (20)	1.4 (20)	1.4 (20)
rear	1.7 (24)	1.9 (27)	2.1 (30)
6.40S15 6PR			
front	1.6 (23)	1.6 (23)	1.6 (23)
rear	2.0 (29)	2.2 (31)	2.6 (37)

* "CP" is a designation of lighting strength in accordance with American standards.